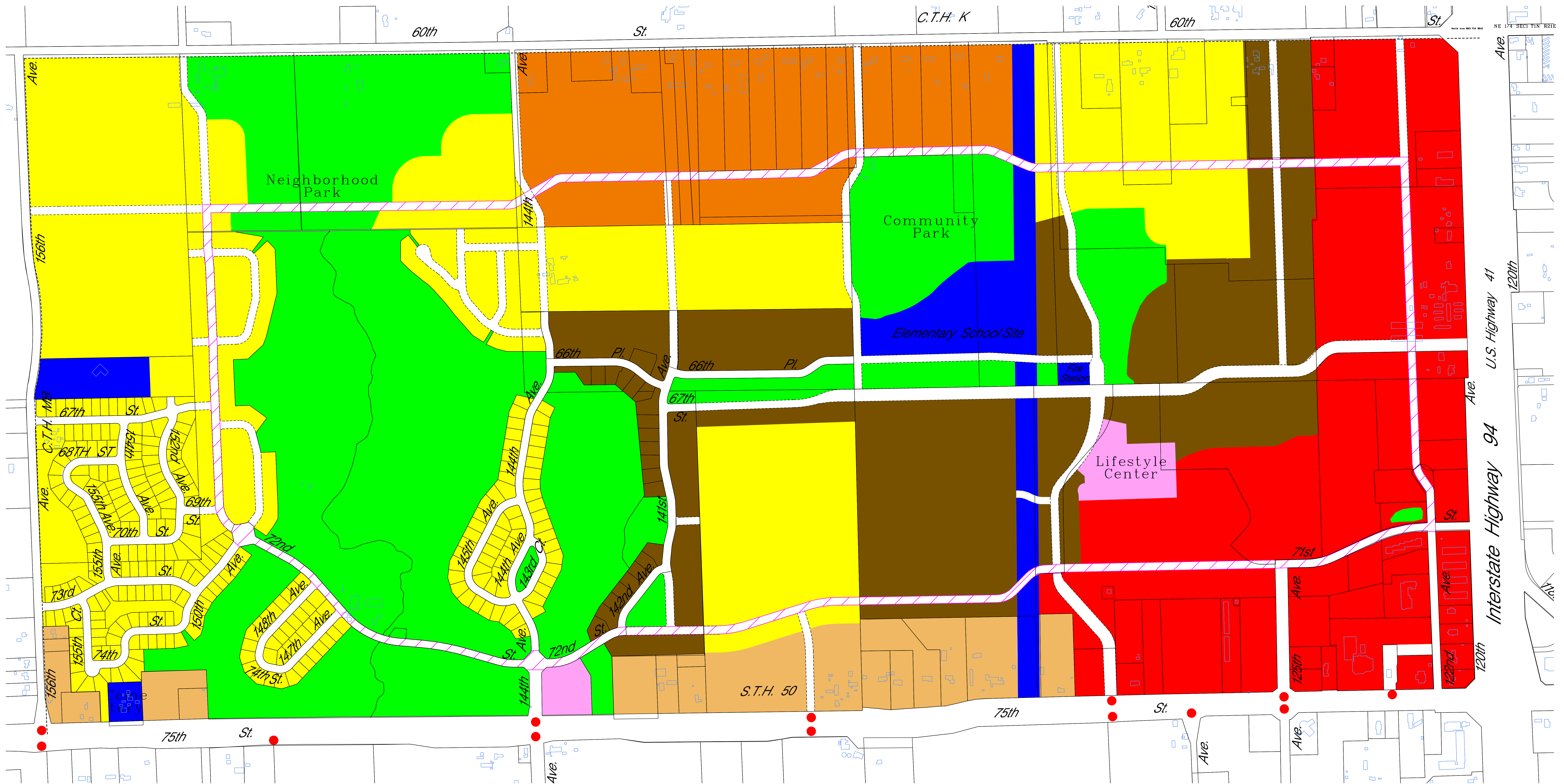


Adopted Bristol Neighborhood Plan



- Single & Two-Family Residential (TRD-1)
- Multiple-Family Residential (TRD-2)
- Multiple-Uses for Traditional Buildings
Low to Moderate Residential Traditional Rural Highway
- Rural (Highway) Single-Family Residential
- Institutional/Utilities
- Open Space / Park

- Neighborhood Commercial
- Community & Regional Commercial
- Ring Road
- Planned Public Street
Access Locations for STH 50
- Municipal Boundary

Comprehensive Plan Certificate	
City Plan Commission Resolution No. 07-99	Date Adopted: 9-23-1999
Location: Bristol Neighborhood Plan	
North: 60th Street (C.T.H. K)	
South: 75th Street (S.T.H. 50)	
East: Interstate 94 (I-94)	
West: 156th Avenue (C.T.H. MB)	
Amendments	
City Plan Commission Resolution No. 07-02	Date: 12-5-2002
Location: Bristol Neighborhood Plan	
Change: Various Amendments to the Bristol Neighborhood Plan	
City Plan Commission Resolution No. 3-05	Date: 7-7-2005
Location: Bristol Neighborhood Plan	
Change: Various amendments to the Bristol Neighborhood Plan	

